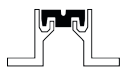
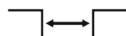




For seismic zone



Recess mounted



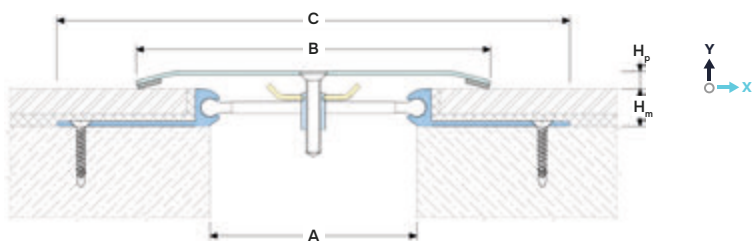
Joint width 50-1000 mm



Movements in 3 directions



Indoor/outdoor



DESIGNATIONS:

A – nominal joint width;
B – visible width;
C – min mounting seat;
H_p – profile height;

H_m – installation depth;
M_x – horizontal movements;
M_y – Y-axis movements.

Profile	Cover type ⁴	Sizes, mm				Movements, mm		
		A ²	B ³	C	H _p	M _x	M _y	
AV 25/50/...	ALE ⁵ / ALS ⁵ / SS / BR	50	75	200	7	16, 20, 25, 30, 50, 70, 80, 100, 110, 120, h ⁶	50 (+25/-25)	10 (+5/-5)
AV 25/100/...	ALE ⁵ / ALS ⁵ / SS / BR	100	150	250	7		100 (+50/-50)	16 (+8/-8)
AV 25/150/...	ALE ⁵ / ALS ⁵ / SS / BR	150	200	300	7		150 (+75/-75)	20 (+10/-10)
AV 25/200/...	ALS ⁵ / SS / BR	200	300	350	7		200 (+100/-100)	26 (+13/-13)
AV 25/250/...	ALS ⁵ / SS / BR	250	375	400	7		250 (+125/-125)	30 (+15/-15)
AV 25/300/...	ALS ⁵ / SS / BR	300	450	450	7		300 (+150/-150)	36 (+18/-18)
AV 25/400/...	ALS ⁵ / SS / BR	400	600	550	7		400 (+200/-200)	40 (+20/-20)
AV 25/500/...	ALS ⁵ / SS / BR	500	750	650	7		500 (+250/-250)	50 (+25/-25)

¹... – profile height, selected from H_m values.

² The profile can be made to order for a specific width of the expansion joint and the amount of possible movements.

³ The standard width is indicated when using a profile for seismic joints with the specified limits of movement. The width of the cover can be changed on request to smaller or larger, but cannot be smaller than the joint width +20 mm.

⁴ The cover can be made in a choice of different materials. See «Material and Profile Designation».

⁵ ALE – continuous aluminium extrusion cover; ALS – continuous aluminium sheet cover.

⁶ The profile can be made to the required mounting height, where «h» is the value in mm (from 50). In this case, the profile article has the designation AV-H (see EXECUTION OPTIONS #1). Ask for details.

► TECHNICAL DATA

→ COVER

The profile is made to order from various materials to choose from:

Material	Aluminium (5052-H34)	Brass	AISI 304/316
Profile designation	ALE/ALS-XXXX XXXX – RAL color	BR-XX XX – brass surface	SS304/316-XX XX – steel surface
Strength, MPa	σ _b = 265	σ _b = 330	σ _b = 515
Tolerances	EN 1090-3	EN 1090-2	EN 1090-2
Length, m	3,0	3,0	3,0
Tooling	Mounting holes	Mounting holes	Mounting holes
Fasteners	Included	Included	Included
Surface coat	Mill finish/Anodized On request: powder coated in RAL color or anodized in various colors (ask for details).	See "Brass surface finishes"	See "Stainless steel surface finishes"

→ FRAME

Material	Aluminum EN AW 6063 T6 (T66 ⁷)
Tolerances	EN 12020-2:2008
Strength, MPa	σ _b = 205 (250 ⁷)
Length, m	3,0
Tooling	Mounting holes
Fasteners	Included (Dowel-nail)
Surface coat	Mill finish

⁷ For EU Market

▶ LABELING

(example)



AV 25/200-250(SS304-2B)/50

Profile Series:

AV 25 – standard version

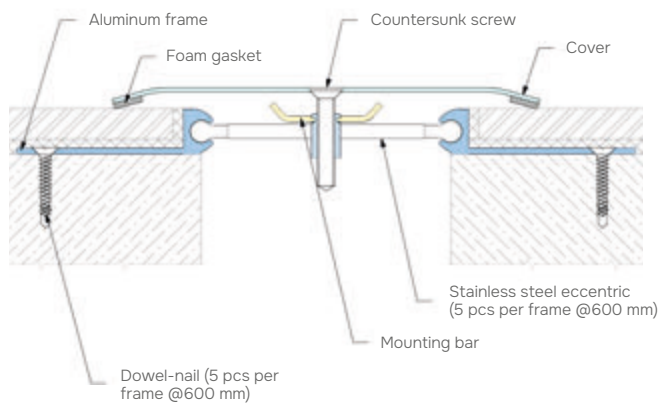
AV-E 25 (marked if required – see «Corner version»)

AV-H 25 – profile height on request (marked if required - see Execution options #1)

Surface cover

marked if required – see «Surface coat»

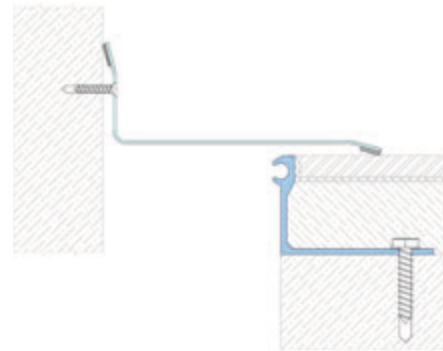
▶ EQUIPMENT PROFILE



▶ CORNER VERSION

Profiles have corner versions for Floor-to-wall connections (joint along the wall). These profiles have an index «E»: SV-E

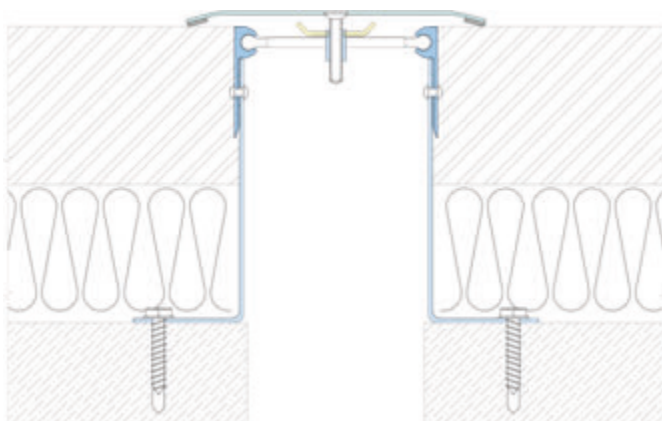
Example: AV-E 25/100-150(SS304-4N)/50



▶ EXECUTION OPTIONS

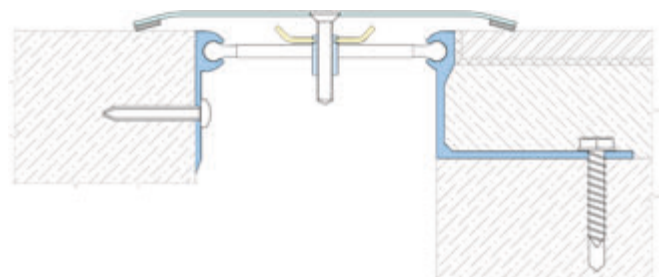


The profile can be made to order for the required height from 50 to 200 mm. In this case, it is completed with an assembled frame consisting of an aluminum guide and a steel angle.



Recess - top mounted profile version (AV 23-25 or AV 24-25).

Example: AV-E 25/100-150(SS304-4N)/50



Different height version of the profile.

Example: AV 25/100-150(SS430-4N)/50-20

