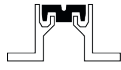


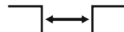
DUALLINE HEAVY SV 57



For seismic zone



Recess mounted



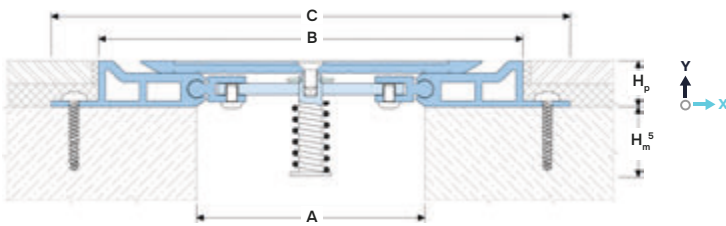
Joint width 50-500 mm



Movements in 3 planes



Indoor/outdoor



DESIGNATIONS:

A – nominal joint width;
B – visible width;
C – full width (min mounting seat);
H_p – installation height;

H_m – eccentric penetration depth;
M_s – seismic movements;
M_x – horizontal movements;
M_y – vertical movements.

Profile	Cover type ³	Sizes, mm				Movements, mm			Permissible loads (kN)			
		A ²	B	C	H _p	M _s ⁶	M _x	M _y				
SV 57/50/... ¹	.1 / .3 / .5	50	136	176	25, 50, 75, 100	Up to ±100% ⁶	70 (+50/-20)	10 (+5/-5)	50	600	90 ⁴	30
SV 57/80/... ¹	.1 / .3 / .5	80	166	206		Up to ±100% ⁶	70 (+50/-20)	16 (+8/-8)	50	600	90 ⁴	30
SV 57/100/... ¹	.1 / .3 / .5	100	186	226		Up to ±100% ⁶	70 (+50/-20)	20 (+10/-10)	50	600	90 ⁴	30
SV 57/125/... ¹	.1 / .3 / .5	125	211	251		Up to ±100% ⁶	70 (+50/-20)	26 (+13/-13)	50	300	70 ⁴	20
SV 57/150/... ¹	.1 / .3 / .5	150	236	276		Up to ±100% ⁶	70 (+50/-20)	30 (+15/-15)	50	300	70 ⁴	20
SV 57/200/... ¹	.1 / .3 / .5	200	286	326		Up to ±100% ⁶	70 (+50/-20)	40 (+20/-20)	50 ⁴	100	50 ⁴	10
SV 57/250/... ¹	.1 / .3 / .5	250	336	376		Up to ±100% ⁶	70 (+50/-20)	40 (+20/-20)	50 ⁴	50	30 ⁴	10
SV 57/300/... ¹	.1 / .3 / .5	300	386	426		Up to ±100% ⁶	70 (+50/-20)	40 (+20/-20)	50 ⁴	50	30 ⁴	5
SV 57/400/... ¹	.1 / .3 / .5	400	486	526		Up to ±100% ⁶	70 (+50/-20)	40 (+20/-20)	50 ⁴	–	–	5
SV 57/500/... ¹	.1 / .3 / .5	500	586	526		Up to ±100% ⁶	70 (+50/-20)	40 (+20/-20)	50 ⁴	–	–	–

¹... – installation height to choose from standard (see H)

² Standard expansion joint width shown. The profile can be made to the required width from 50 to 500 mm.

³ The cover can be made in a choice of different materials. See «Cover Types».

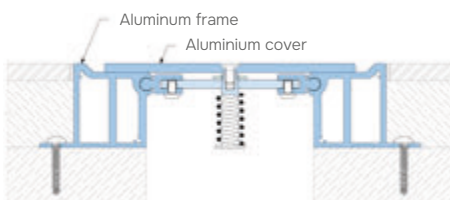
⁴ Not for cover type .1. Solid wheels are not allowed. Consider the DUALLINE Heavy SV 51 or DUALLINE Metall series.

⁵ The depth of penetration into the expansion joint of the spring bar – For height H_p=20 mm - 30 mm; – For height H=50, 75 and 100 mm - 0 mm.

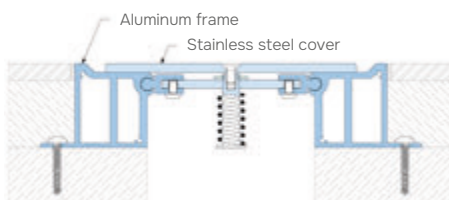
⁶ The standard allowable movement for seismic joints is specified as +/-50% of the joint width. On request, the profile can be produced with allowable seismic movements up to +/-100% of the joint width - request additional data.

► COVER TYPES

→ .1 (SV 57.1)



→ .3 (SV 57.3)



→ .5 (SV 57.5)



▶ LABELING

(example)



Profile Series:

SV 57 or 51.1 – standard version (all aluminum parts);
 SV 57.3 – The cover is made of stainless steel;
 SV 57.5 – The cover and protective cover are made of stainless steel.

Only applicable for SV 57.5 series. Indicates the protective cover on the profile frame and its material.

▶ TECHNICAL DATA

→ FRAME

Material	Aluminum EN AW 6063 T66
Tolerances	EN 12020-2:2008
Strength, MPa	$\sigma_b = 250$
Length, m	3,0
Tooling	Mounting holes
Fasteners	Included (Screws Rawlplug R-LX-5x50-HF)

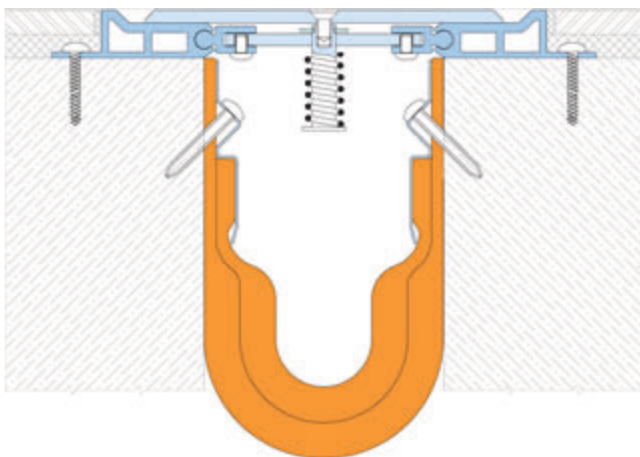
→ COVER

Material	Aluminum EN AW 6063 T66	AISI 304 ⁵ (1.4301)	AISI 316 ⁵ (1.4404)	AISI 430 ⁵ 1.4016)
Profile designation⁴	AL	SS304	SS316	SS430
Strength, MPa	$\sigma_b = 250$	$\sigma_b = 515$	$\sigma_b = 485$	$\sigma_b = 450$
Tolerances	EN 1090-3	EN 1090-2	EN 1090-2	EN 1090-2
Length, m	3,0	3,0	3,0	3,0
Tooling	Mounting holes	Mounting holes	Mounting holes	Mounting holes
Surface coat	Mill finish	1N or grind	1N or grind	1N or grind

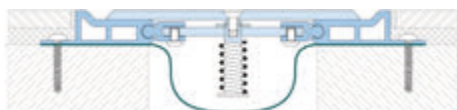
▶ EXECUTION OPTIONS



Use of a fire barrier with a fire resistance rating of up to EI 240.



Using a vapor barrier for waterproofing an expansion joint.



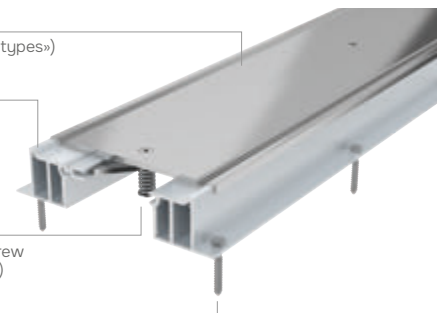
▶ EQUIPMENT PROFILE

Cover (3 types: see «Cover types»)

Al. recessed frame

Steel centering bar with screw
(8 pcs per profile @375 mm)

Hex head screw (10 pcs per frame @300 mm)



▶ CORNER VERSION

All profiles have corner versions for floor-to-wall connections (joint along the wall). These profiles have an «E» index: SV-E.

Example: SV-E 57.3/100-150(SS)/25

