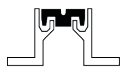


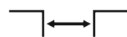
DUALLINE HEAVY SV 43



Loads up to 600 kN



Recess mounted



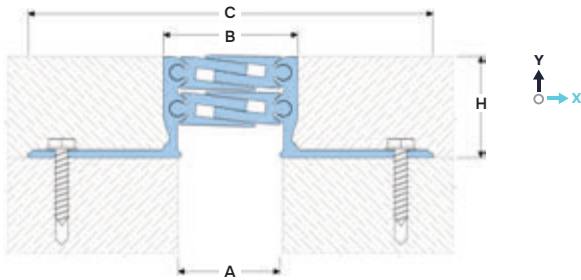
Joint width up to 85 mm



Movements in 3 planes



Indoor/outdoor



DESIGNATIONS:

A – nominal joint width;
B – visible width;
C – full width (min mounting);

H – installation depth;
 M_x – horizontal movements;
 M_y – Y-axis movements.

Profile	Sizes, mm				Movements, mm		Permissible loads (kN)			
	A	B	C	...=H ¹	M_x	M_y				
SV 43/35/... ¹	35	195	195	34, 50, 80	10 (+5/-5)	10 (+5/-5)	50	600	140	20
SV 43/50/... ¹	50	210	210		14 (+7/-7)	10 (+5/-5)	50	600	140	20
SV 43/65/... ¹	65	225	225		24 (+12/-12)	20 (+10/-10)	50	600	140	20
SV 43/85/... ¹	85	245	245		30 (+15/-15)	34 (+17/-17)	50	600	140	20

¹... – installation height to choose from standard (see H)

▶ TECHNICAL DATA

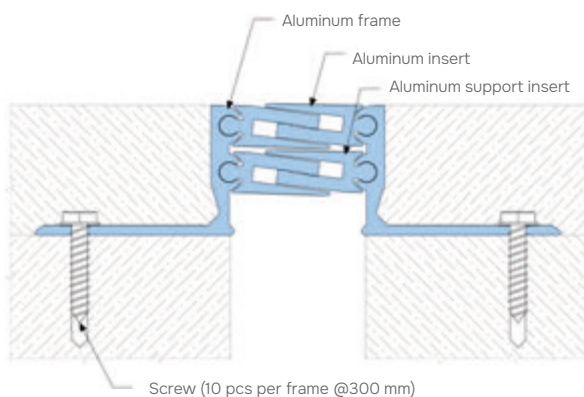
→ FRAME AND INSERT

Material	Aluminum EN AW 6063 T6 (T66 ²)
Strength, MPa	$\sigma_b = 205$ (255 ²)
Tolerances	EN 12020-2:2008
Tooling	Mounting holes
Fasteners	Optional (Screws Rawlplug)
Surface coat	Mill finish ³
Length, m	3,0

²For EU market.

³The profile can be optionally anodized (ask for details).

▶ EQUIPMENT PROFILE



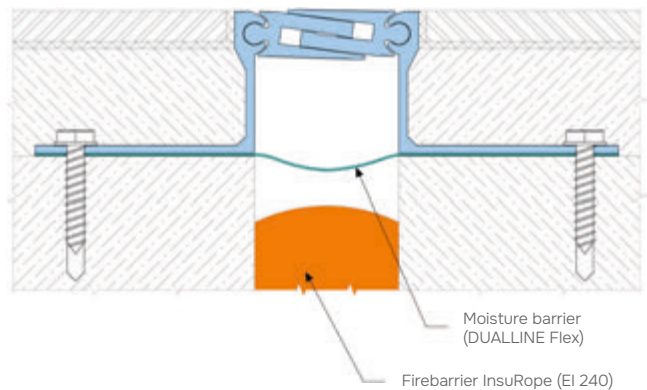
▶ EXECUTION OPTIONS



Using a moisture barrier for waterproofing an expansion joint.



Use of a fire barrier with a fire resistance rating of up to EI 240.



▶ DESCRIPTION

The DUALLINE Heavy SV 43 profile is a reinforced version of the SV 41 profile for ultra-high loads and traffic.