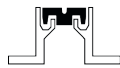
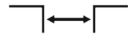




Loads up to 600 kN



Recess mounted



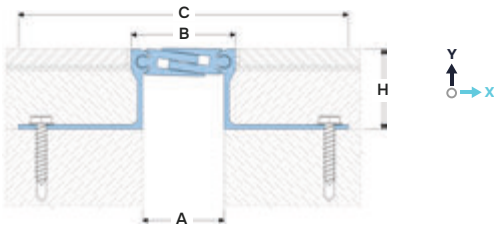
Joint width 35-200 mm



Movements in 3 planes



Indoor/
outdoor⁴



DESIGNATIONS:

A – nominal joint width;
B – visible width;
C – width seat;

H – installation height;
 M_x – horizontal movements;
 M_y – vertical movements;

Profile	Sizes, mm				Movements, mm		Permissible loads ³ (kN)			
	A	B	C	...=H ¹	M_x	M_y				
SV 41/35/... ¹	35	50	195	16, 20, 25, 30, 34, 50, 70, 80, 100, 110, 120, 150, h ²	10 (+5/-5)	10 (+5/-5)	50	600	70	20
SV 41/50/... ¹	50	65	210		14 (+7/-7)	10 (+5/-5)	50	600	70	20
SV 41/65/... ¹	65	80	225		24 (+12/-12)	20 (+10/-10)	50	600	70	20
SV 41/85/... ¹	85	100	245		30 (+155/-15) ⁵	34 (+17/-17)	50	600	70	15
SV 41/105/... ¹	105	120	265		44 (+225/-22) ⁵	40 (+20/-20)	50	600	70	10
SV 41/115/... ¹	115	130	275		24 (+125/-12) ⁵	20 (+10/-10)	50	300	30	5
SV 41/135/... ¹	135	150	295		30 (+155/-15) ⁵	34 (+17/-17)	50	300	30	5
SV 41/155/... ¹	155	170	315		30 (+155/-15) ⁵	34 (+17/-17)	50	300	30	5
SV 41/200/... ¹	200	215	360		44 (+225/-22) ⁵	50 (+25/-25)	50	300	30	5

¹... – installation height to choose from standard (see H)

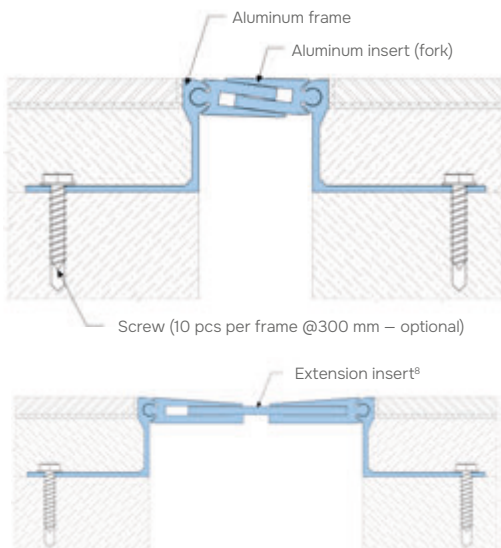
²Mounting height of the profile on request, where "h" is a value in mm (selectable in the range from 50 to 200 mm), designated by the SV-H index (see "execution options" #3).

³Not for permanent use for heights from 16 to 34 mm (approval required) - at high loads, cracking of the finish coating over the profile is possible.

⁴It is not recommended to use the profile under the open rays of the sun and with possible large temperature fluctuations due to the large difference in the coefficients of thermal expansion of concrete and aluminum.

⁵In the fully extended state, the load-bearing capacity of the profile is reduced. Request data.

► EQUIPMENT PROFILE



⁸Profiles for a joint width of 115 mm are completed with an extension insert: - SV 41/115, SV 41/135, SV 41/155, SV 41/200

► TECHNICAL DATA

→ FRAME AND INSERT

Material	Aluminum EN AW 6063 T6 (T66 ⁶)
Strength, MPa	$\sigma_b=205$ (255 ⁶)
Tolerances	EN 12020-2:2008
Tooling	Mounting holes
Fasteners	Optional (Screws Rawlplug)
Surface coat	Without coating ⁷
Length, m	3,0

⁶For EU market.

⁷The profile can be optionally anodized (ask for details).

▶ LABELING

(example)

Profile height (May have a double meaning if a different height version is used – see #4)

Powder coating or anodized (marked if required)

Joint width

SV41/50/50/GAN

SV 41– standard version

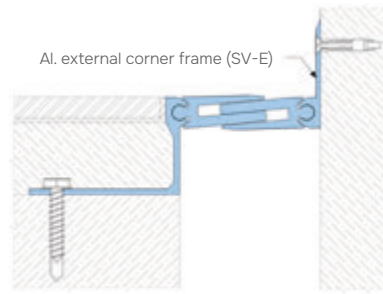
SV-E 41– marked if required – see “Corner version”

SV-H 41– profile height on request (marked if required – see #3)

SV-HAU 41– profile version SV-H 41 with additional anchors (marked if required – see #3)

▶ CORNER VERSION

Profiles have corner versions for Floor-to-wall connections joint along the wall). These profiles have an index “E”: SV-E.



Example: SV-E 41/65/50

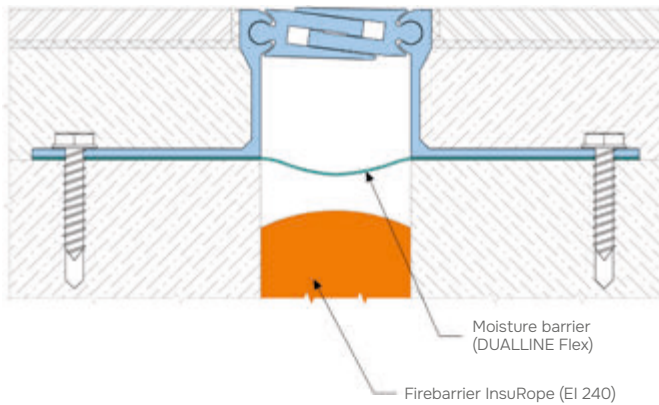
▶ EXECUTION OPTIONS



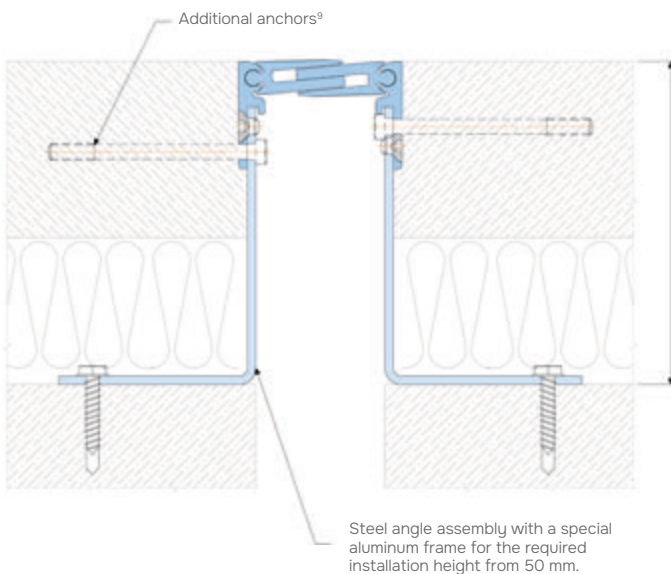
Using a moisture barrier for waterproofing an expansion joint.



Use of a fire barrier with a fire resistance rating of up to EI 240.

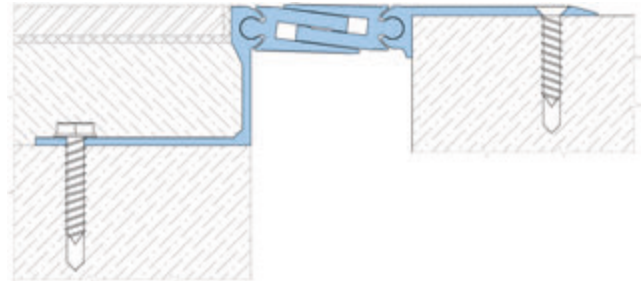


The profile can be made to order for the required height from 50. In this case, it is completed with an assembled frame consisting of an aluminum guide and a steel angle.



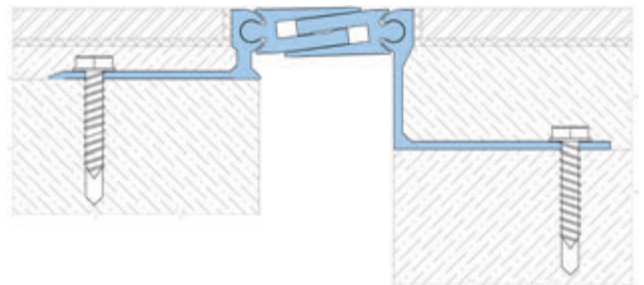
Recess - top mounted profile version (SV 41-42).

Example: SV 41-42/50/50



Different height version of the profile.

Example: SV 41/50/50-25



⁹Additional anchors are recommended for installation heights over 150 mm and high loads.