

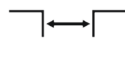
# DUALLINE HEAVY SV 38



For seismic zone



Top mounted



Joint width 25-200 mm



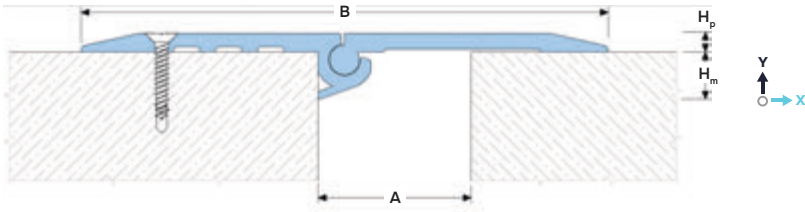
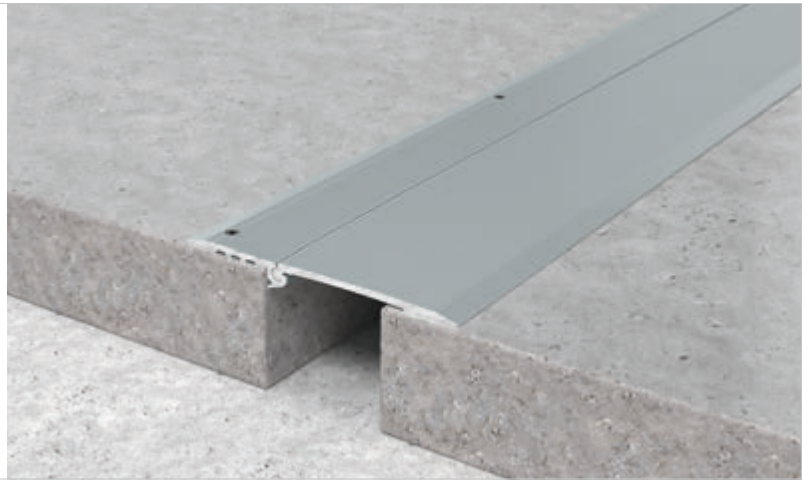
Movements in 3 planes



Indoor/outdoor<sup>4</sup>



Loads up to 300 kN



## DESIGNATIONS:

A – nominal joint width;  $M_x$  – horizontal movements;  
B – visible width;  $M_y$  – vertical movements.

Profile	Sizes, mm				Movements, mm		Permissible loads (kN)			
	A	B	$H_p$	$H_m$	$M_x$ <sup>1</sup>	$M_y$ <sup>2</sup>				
SV 38/50	25-80	200	6	20	see tab	-30	50	300	50	5
SV 38/100	50-150	275	8,5	20	see tab	-45	50	300	50	5
SV 38/150	120-200	340	10	20	see tab	-70	50	300	50	5

<sup>1</sup>The permissible value of horizontal movements depends on the width of the expansion joint on which the profile is installed. See tab. "Movements".!

<sup>2</sup>When vertical (settlement) movements occur, the bearing capacity of the profile decreases. Request more information.

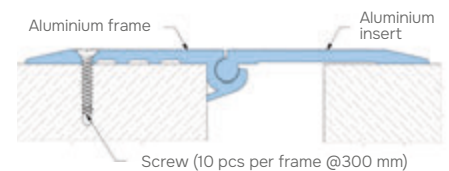
<sup>3</sup>In the case of vertical (settlement) movement, the profile must be fixed to the part of the building with the smallest settlement.

<sup>4</sup>It is not recommended to use the profile under the open rays of the sun and with possible large temperature fluctuations due to the large difference in the coefficients of thermal expansion of concrete and aluminum.

## ► MOVEMENTS

SV 38/50		SV 38/100		SV 38/150	
A	$M_x$	A	$M_x$	A	$M_x$
25	-5/+65	50	-30/+110	120	-100/+110
30	-10/+60	60	-40/+100	130	-110/+100
40	-20/+50	70	-50/+90	140	-120/+90
50	-30/+40	80	-60/+80	150	-130/+80
60	-40/+30	100	-80/+60	160	-140/+70
70	-50/+20	120	-100/+40	180	-160/+50
80	-60/+10	150	-130/+15	200	-180/+30

## ► EQUIPMENT PROFILE



## ► TECHNICAL DATA

<b>Material</b>	Aluminum EN AW 6063 T6 (T66 <sup>5</sup> )
<b>Strength, MPa</b>	$\sigma_e=205$ (255 <sup>5</sup> )
<b>Tolerances</b>	EN 12020-2:2008
<b>Tooling</b>	Mounting holes
<b>Fasteners</b>	Included (Screws Rawlplug)
<b>Surface coat</b>	Without coating <sup>6</sup>
<b>Length, m</b>	3,0

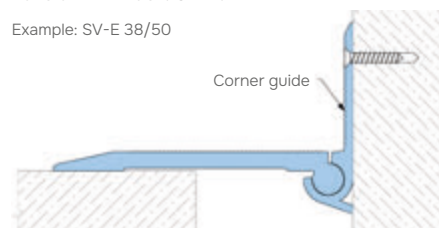
<sup>5</sup> For EU market.

<sup>6</sup> The profile can be optionally anodized (ask for details).

## ► CORNER VERSION

All profiles have corner versions for floor-to-wall connections (joint along the wall). These profiles have an "E" index: SV-E.

Example: SV-E 38/50



## ► ASSEMBLY

To facilitate the assembly process of the profile, use WD-40 silicone grease or equivalent.

To fasten the profile, it is recommended to use RAWLPLUG R-LX 6x50-CS concrete screws (included) or an equivalent (10 pieces per 3 meters).