

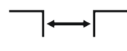
DUALLINE HEAVY SG 36



Loads up
to 100 kN



Top
mounted



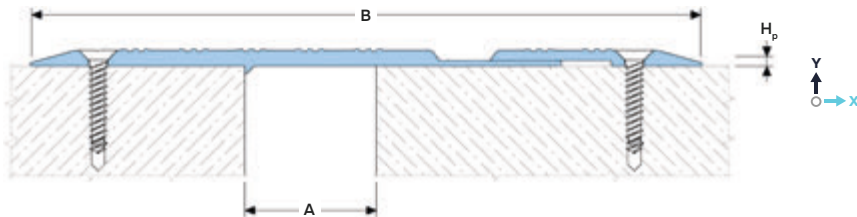
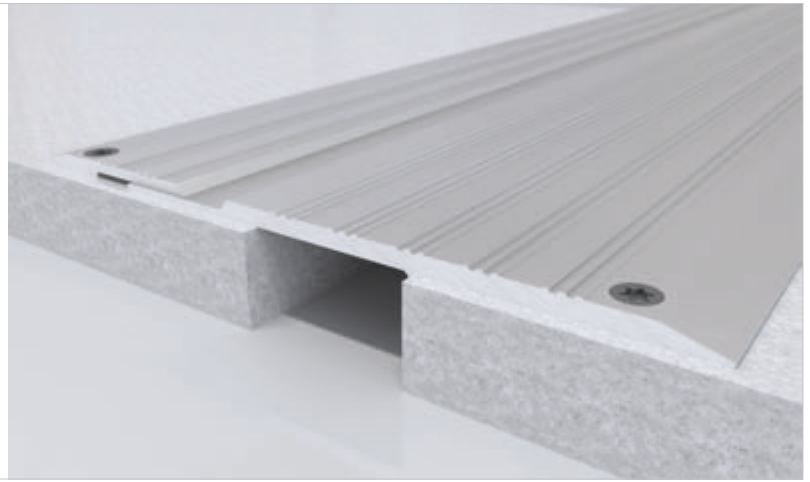
Joint width
up to 55 mm



Movements
in 3 planes



Indoor/
outdoor²



DESIGNATIONS:

A – nominal joint width;
B – visible width;
H_p – profile height;

M_x – horizontal movements;
M_y – vertical movements.

Profile	Sizes, mm			Movements, mm		Permissible loads ¹ (kN)			
	A	B	H _p	M _x	M _y				
SG 36/300	Up to 60	300	8	70 (+20/-50)	4 (+2/-2)	50	100	50	10

¹The profile is suitable for parking lots and similar buildings and is not intended for open areas with free movement of vehicles at speeds exceeding 10 km/h.

²It is not recommended to use the profile under the open rays of the sun and with possible large temperature fluctuations due to the large difference in the coefficients of thermal expansion of concrete and aluminum.

▶ TECHNICAL DATA

→ FRAME AND INSERT

Material	Aluminum EN AW 6063 T6 (T66 ³)
Strength, MPa	$\sigma_b = 205$ (255 ³)
Tolerances	EN 12020-2:2008
Tooling	Mounting holes
Fasteners	Included (Screws Rawlplug)
Surface coat	Mill finish ⁴
Length, m	3,0

³ For the EU market.

⁴ The profile can be optionally anodized (ask for details).

▶ EQUIPMENT PROFILE

