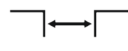




Loads up to 100 kN



Top mounted



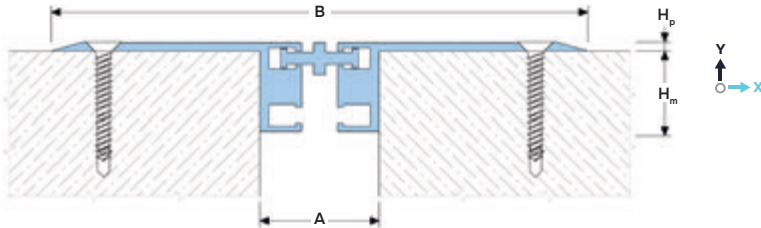
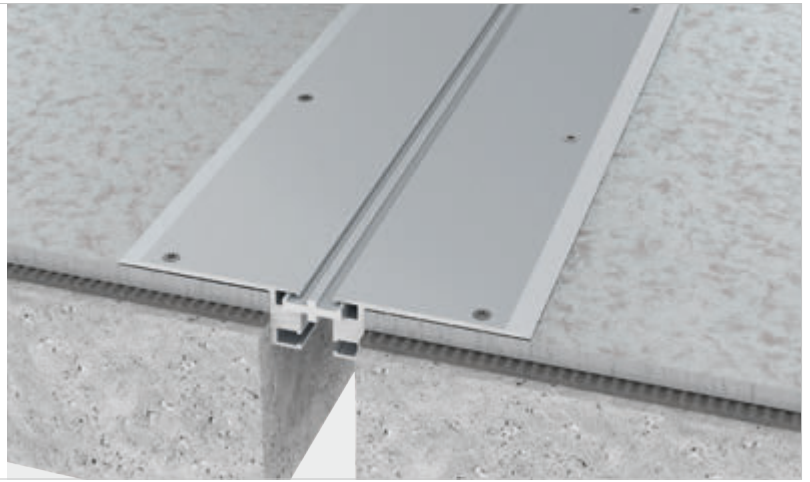
Joint width up to 55 mm



Movements in 3 planes



Indoor/outdoor<sup>2</sup>



**DESIGNATIONS:**

A – nominal joint width;       $H_m$  – installation height;  
 B – visible width;               $M_x$  – horizontal movements;  
 $H_p$  – profile height;            $M_y$  – vertical movements.

Profile	Sizes, mm				Movements, mm		Permissible loads <sup>1</sup> (kN)			
	A	B	$H_m$	$H_p$	$M_x$	$M_y$				
SG 32/40	40	180	27	3	14 (+7/-7)	4 (+2/-2)	50	100	50	–
SG 32/55	55	195	27	3	14 (+7/-7)	4 (+2/-2)	50	100	50	–

<sup>1</sup>The profile is suitable for parking lots and similar buildings and is not intended for open areas with free movement of vehicles at speeds exceeding 10 km/h.

<sup>2</sup>It is not recommended to use the profile under the open rays of the sun and with possible large temperature fluctuations due to the large difference in the coefficients of thermal expansion of concrete and aluminum.

► **TECHNICAL DATA**

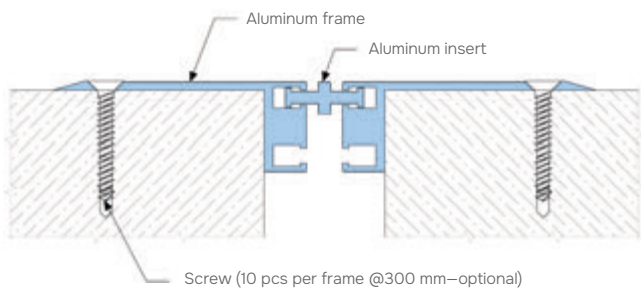
→ **FRAME AND INSERT**

<b>Material</b>	Aluminum EN AW 6063 T6 (T66 <sup>3</sup> )
<b>Strength, MPa</b>	$\sigma_b = 205$ (255 <sup>3</sup> )
<b>Tolerances</b>	EN 12020-2:2008
<b>Tooling</b>	Mounting holes
<b>Fasteners</b>	Included (Screws Rawlplug)
<b>Surface coat</b>	Mill finish <sup>4</sup>
<b>Length, m</b>	3,0

<sup>3</sup> For the EU market.

<sup>4</sup> The profile can be optionally anodized (ask for details).

► **EQUIPMENT PROFILE**



► **CORNER VERSION**

Profiles have corner versions for Floor-to-wall connections (joint along the wall). These profiles have an index "E": SG-E.

