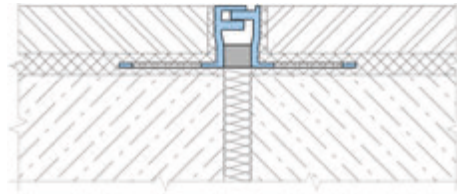
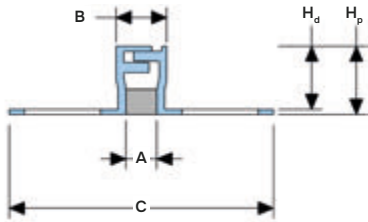


Recess  
mounted



Indoor/  
outdoor



**DESIGNATIONS:**

A – joint width; H<sub>p</sub> – profile height;  
B – visible width; H<sub>d</sub> – mounting depth;  
C – full width; M<sub>x</sub> – horizontal movements;



Profile	A, mm	B, mm	C, mm	H <sub>p</sub> , mm	H <sub>d</sub> , mm	M <sub>x</sub> , mm
CRG 32/10	6	10	52	10	9	4 (+2/-2)
CRG 32/135	6	10	52	13,5	12,5	4 (+2/-2)
CRG 32/20	6	10	52	30	19	4 (+2/-2)
CRG 32/25	6	10	52	25	24	4 (+2/-2)

**▶ TECHNICAL DATA**

→ **PROFILE**

<b>Material</b>	Aluminum EN AW 6063 T6 (T66 <sup>1</sup> )
<b>Strength, MPa</b>	σ <sub>b</sub> =205 (255 <sup>2</sup> )
<b>Tolerances</b>	EN 12020-2:2008
<b>Tooling</b>	Mounting holes
<b>Fasteners</b>	Not required
<b>Surface coat</b>	Mill finish <sup>2</sup>
<b>Length, m</b>	3,0

<sup>1</sup> For EU market.

<sup>2</sup> The profile can be optionally:

- anodized (ask for details);
- powder coating (ask for details).