

Recess mounted



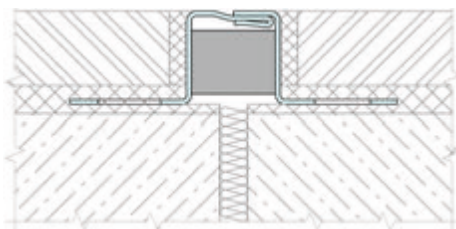
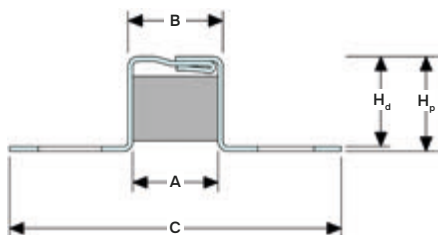
Indoor/  
outdoor



CRG-SS 31



CRG-BR 31



### DESIGNATIONS:

- A – joint width;
- B – visible width;
- C – full width;
- H<sub>p</sub> – profile height;
- H<sub>d</sub> – mounting depth;
- M<sub>x</sub> – horizontal movements;

Profile	A, mm	B, mm	C, mm	H <sub>p</sub> <sup>2</sup> , mm	H <sub>d</sub> <sup>2</sup> , mm	M <sub>x</sub> , mm
CRG 31/20/10	18	20	55	10	9	4 (+2/-2)
CRG 31/20/13	18	20	55	13	12	4 (+2/-2)
CRG 31/20/15	18	20	55	15	14	4 (+2/-2)
CRG 31/20/18	18	20	55	18	17	4 (+2/-2)
CRG 31/20/20	18	20	55	20	19	4 (+2/-2)
CRG 31/20/22	18	20	55	22	21	4 (+2/-2)
CRG 31/20/25	18	20	55	25	24	4 (+2/-2)
CRG 31/20/30	18	20	55	30	29	4 (+2/-2)
CRG 31/20/35	18	20	55	35	34	4 (+2/-2)
CRG 31/20/40	18	20	60	40	39	4 (+2/-2)
CRG 31/20/50	18	20	70	50	49	4 (+2/-2)
CRG 31/20/60	18	20	80	60	59	4 (+2/-2)
CRG 31/20/70	18	20	80	70	69	4 (+2/-2)
CRG 31/20/80	18	20	80	80	79	4 (+2/-2)
CRG 31/20/90	18	20	80	90	89	4 (+2/-2)
CRG 31/20/100	18	20	80	100	99	4 (+2/-2)
CRG 31/20/110	18	20	80	110	109	4 (+2/-2)
CRG 31/20/120	18	20	80	120	119	4 (+2/-2)
CRG 31/20/130	18	20	80	130	129	4 (+2/-2)
CRG 31/20/140	18	20	80	140	139	4 (+2/-2)
CRG 31/20/150	18	20	80	150	149	4 (+2/-2)

<sup>1</sup>On request, the profile can be manufactured from other materials and alloys (please ask for more information). The profile can be manufactured to any required height from 10 mm.

<sup>2</sup>NOTE: For heights from 80 mm the profile can be manufactured with additional horizontal anchors for better anchoring in the finish layer (enquire for details).

## ▶ TECHNICAL DATA

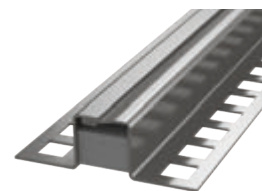
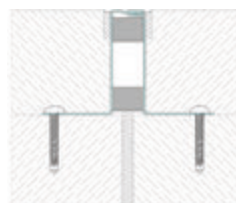
### → PROFILE

The profile is made to order from various materials to choose from:

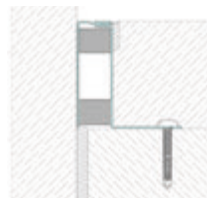
Material	AISI 304/316	Brass
<b>Profile designation</b>	SS304/316-XX XX – steel surface	BR-XX XX – brass surface
<b>Strength, MPa</b>	σ <sub>b</sub> =515	σ <sub>b</sub> =340-700
<b>Tolerances</b>	EN 1090-2	EN 1090-2
<b>Length, m</b>	1, 1.25, 2, 2.5	1, 1.25, 2, 2.5
<b>Tooling</b>	Mounting holes	Mounting holes
<b>Fasteners</b>	Not included	Not included
<b>Surface coat</b>	see "St. steel surface finishes"	see "Brass surface finishes"

## ▶ VIEW

It is recommended that profiles with a height of 60 mm or more are additionally secured with screws.



## ▶ CORNER VERSION



Profiles have corner versions for Floor-to-wall connections (joint along the wall). These profiles have an index "E": CRG-E.

Example: CRG-E 31/20/50