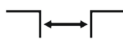




Top
mounted



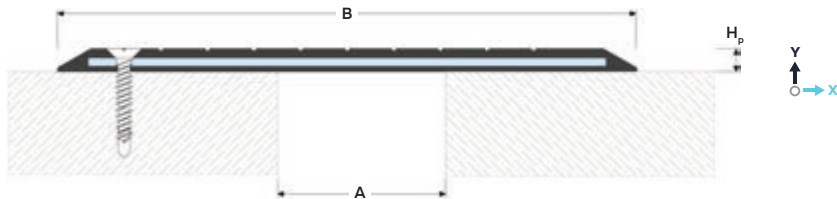
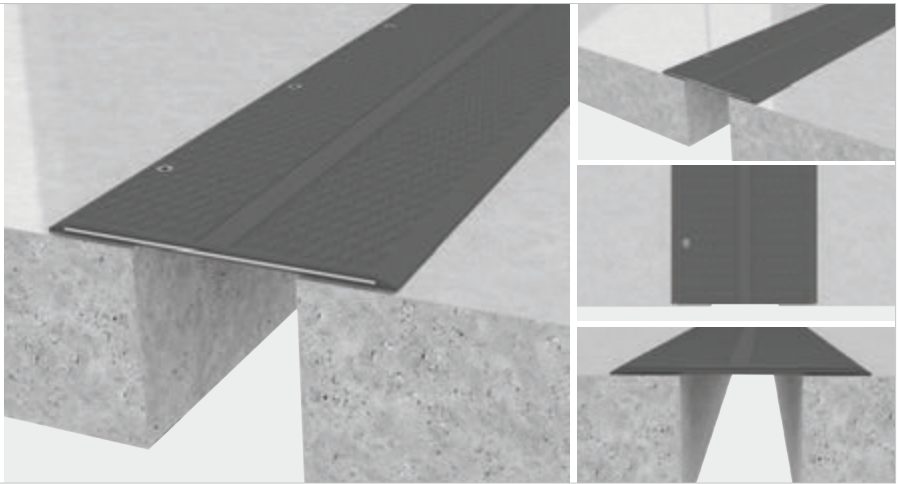
Joint width
10-400 mm



Movements
in 2 directions



Indoor/
outdoor



DESIGNATIONS:

A – nominal joint width; M_x – horizontal movements;
B – visible width; M_y – vertical movements.
 H_p – profile height;

Profile	Sizes, mm			Movements, mm		Permissible loads (kN)			
	A ¹	B	H _p	M_x ¹	M_y ²				
SV-HD 16.R/200	10-100	200	12	up tp ±100%	–	50 ³	600 ³	100 ³	20 ³
SV-HD 16.R/300	100-150	300	12	up tp ±100%	–	50 ³	600 ³	100 ³	20 ³
SV-HD 16.R/400	150-200	400	12	up tp ±100%	–	50 ³	600 ³	100 ³	20 ³
SV-HD 16.R/600	200-300	600	16	up tp ±100%	–	50 ³	600 ³	100 ³	20 ³
SV-HD 16.R/800	300-400	800	20	up tp ±100%	–	50 ³	600 ³	100 ³	20 ³

¹ The permissible value of horizontal movements depends on the width of the expansion joint on which the profile is installed. Ask for more details.

² Vertical movements are not recommended.

³ The permissible loads depend on the opening width of the joint.

► **DESCRIPTION**

DUALLINE Standart SV-HD 16.R is a one side hinged, rubber reinforced with steel elements that is ideal for pedestrian walkways, slow speed vehicular traffic areas etc. The System designed with anti-slip grooves reduces potential trip hazards and minimize noise caused due to vehicular movements. Independent Steel reinforcements are integral part of the product that allows movements in response to vertical displacements between the opposite concrete slabs. In addition the metal plates provided in the center provides high load openings.

Product features:

- Specially designed independent steel reinforcements in SV-HD 16.R encapsulated in rubber features flexibility and high load bearing capacity.
- Thickness of steel inserts on SV-HD 16.R joint covers are designed based on joining openings and load values.
- Steel encapsulated in rubber eliminates noise caused due to vehicular movements.
- High tensile synthetic rubber combined with steel protects the material from deterioration.
- Direct bolting of SV-HD 16.R joints to the concrete slab on one side.

► **OPTIONAL**

- Corner versions on request - ask for more details.
- Fasteners are available as an option.
- For waterproofing it is necessary to use DUALLINE Flex-E EPDM membrane, DUALLINE Flex TPE membrane or DUALLINE Standart SV 17 profile.

► **TECHNICAL DATA**

	Profile	Reinforcement
Material	Synthetic rubber	Steel S235J2
Tooling	Mounting holes	
Fasteners	Not included	
Surface coat	Without coating ⁵	
Length, m	2,0	

⁵ The profile can be optionally anodized (ask for details).

► **EQUIPMENT PROFILE**

